

# The Vine Pastoral Counseling Center

## Legacy of Hope Capital Campaign



*With your generous partnership over 22 years, The Vine has given hope and changed A LOT of lives with the love and grace of Christ. Help us to acquire the permanent facility we need to support our growth. Together we can give the opportunity for healing to future generations.*

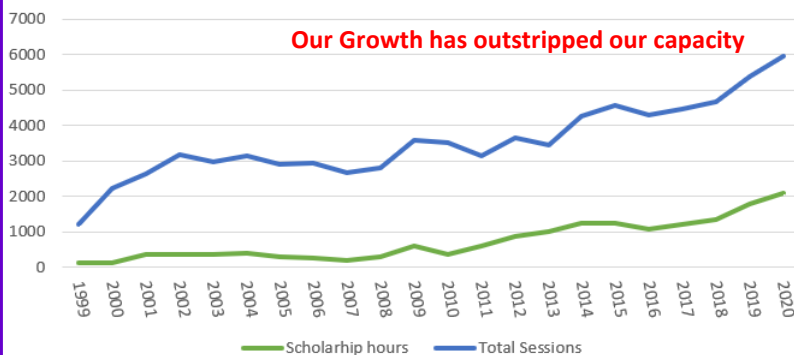
By God's grace and provision, The Vine has been bearing the fruit of restored lives in our community (over 98,000 sessions). Now more than ever, people are showing up at The Vine wounded and broken, seeking some shelter from the storm of conflict, hurt and pain. Visualize the faces: rejected, despairing, depressed, unable to live whole lives, afraid to die, suffering ruptured relationships, brokenhearted and grieving. Now imagine those life stories changing, by the very touch of God's hand. There is nothing more beautiful than to see a soul set free, to see a life transformed. As a 501c3 organization, the presence of The Vine relies on generous supporters to partner in this amazing healing miracle that God has given us to do.



### WE ARE GROWING!

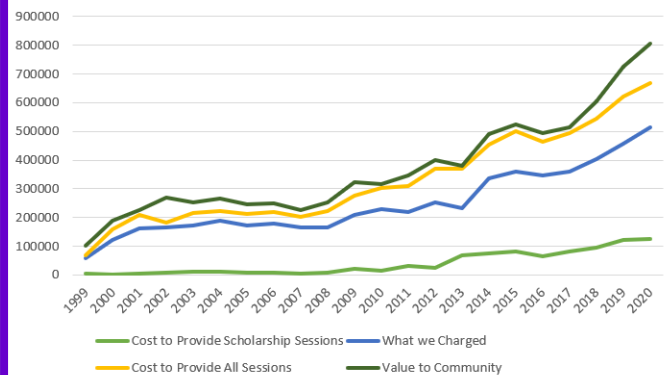
Our work is not done, and your support is now more necessary than ever. We are currently providing over 600 sessions a month. We have served people from over 170 congregations and seeing more every month. We have grown from 10 supporting churches to 21 supporting churches. With Huntsville being the fastest growing city in the state, we expect the demand to only increase.

Counseling Hours



Scholarship Sessions (< \$40,000 Annual Gross Family Income)

Our Growth over 21 years



Sliding Fee Scale—Session Fees reduced across the spectrum

*Join us to give The Vine a sustainable future to make this ministry a permanent part of the community. You are a part of us reaching our dreams!*



## *How do we leave a legacy of hope to the community for the future?*

*We purchase our own building with land. We believe God has led us to 608 Church Street*

With our deepest gratitude to Episcopal Church of Nativity for providing The Vine's host site since 2011, we are now excited to announce our new counseling campus. As our organization has grown, God is blessing us with an opportunity to plant ourselves and establish a new kind of viability for our future. This property will provide ....

- *additional therapy offices for new therapists to end our waitlist. Each new therapist adds 100 sessions per month.*
- *handicap accessibility that will increase the diversity of our service.*
- *meeting space to expand services: on-sight workshops that support healing and wholeness, support groups (addiction recovery, living with bipolar disorder, small worship services, and group therapy.*
- *adequate space for parking, waiting room, administration, restrooms to match our growth curve.*
- *land for future expansion (2.86 acres, one of the last properties in 35801).*
- *a great central location, less than 2 minutes from I-565 and N Memorial Parkway.*
- *beautiful green space to turn into a prayer garden for clients and for the community.*



### ***PHASE I:***

**Purchase of Property**

Cost: \$1,575,030

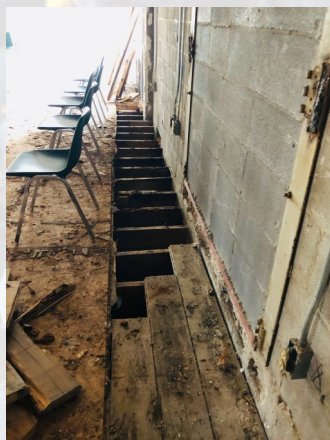
Purchased on August 24, 2022



*God is providing all we need for today and for the future!*



*Giving Hope—Changing Lives—with the love and grace of Christ!*



***PHASE II:***  
Remediation and Preparation  
Cost: \$190,320  
Work Complete!

*Together we can giving the legacy of hope to our community.*



*With your help, Our Forever Home!*



***PHASE III:***

**Renovation**

Cost: \$1,515,000



***PHASE IV:***

**Prayer Garden**

Cost: \$190,000

*Restoring lives*

*Healing and hope for generations to come*

*The gift of a bright future for families and for our community*

*The Vine Pastoral Counseling Center*  
Legacy of Hope Capital Campaign

Expected Expense Overview

**PHASE 1—SECURING THE PROPERTY**

**\$1,575,030**

**PHASE 2—REMEDICATION AND PREPARATION**

**\$ 190,320**

**PHASE 3—RENOVATION**

**\$1,515,000**

**PHASE 4—PRAYER GARDEN**

**\$ 190,000**

---

**TOTAL COST**

**\$3,470,350**

**RAISED TO DATE:**

**—\$2,724,000**

Glory be to God for providing!

---

**TOTAL REMAINING:**

**\$746,350**

*Together we can give*

*the legacy of hope to the future of our community.*

*We can raise \$746,350 to reach our goal!*



# Legacy of Hope Capital Campaign



## Naming Opportunities

Each of 11 Offices—\$50,000      \$ 550,000

- 1) Newell and Mary Witherspoon
- 2) Mr. and Mrs. William C. Stone
- 3) Bill and Judy Case
- 4) Trinity Presbyterian Church
- 5) All Saints Lutheran Church

6 offices remaining that can be named

Conference Room      \$ 75,000

Jane K. Lowe Foundation

Lobby      \$ 100,000

Doris Burwell Foundation

Entryway      \$ 175,000

Taken

Outdoor Garden      \$ 250,000

Available

Community Room      \$ 300,000

Mr. and Mrs. Harry B. Brock, III

Whole Building      \$1,000,000

Taken

Donations will be recognized according to our *Donor Recognition Plan* unless you request anonymity. We deeply value your participation in the dream we believe God is bringing to fruition. We would be honored to have your name or the names of loved ones you would like to honor be displayed and become a part of our facility for future generations to see. Future generations will know that the honored person is part of The Vine's history and thus a foundational part of the services provided many years from now, bringing hope and healing. For more information, please contact

Rev. Dr. Amanda W. Ragland, LMFT

Executive Director

amanda@vinepcc.com  
256-270-7399



*"I am the vine, you are the branches.*

*Apart from me you can do nothing". John 15:5*